

BNIP1 Antibody
Rabbit mAb
Catalog # AP91333**Specification**

BNIP1 Antibody - Product Information

Application	WB, IHC
Primary Accession	Q12981
Reactivity	Rat
Clonality	Monoclonal
Other Names	
BCL2 adenovirus E1B 19kD interacting protein 1; BNIP1; Nip1; sec20; SEC20L; Transformation-related gene 8 protein; TRG8; Vesicle transport protein SEC20;	
Isotype	Rabbit IgG
Host	Rabbit
Calculated MW	26132 Da

BNIP1 Antibody - Additional Information

Dilution	WB~~1:1000 IHC~~1:100~500
Purification	Affinity-chromatography
Immunogen	A synthesized peptide derived from human BNIP1
Description	SNARE that may be involved in targeting and fusion of Golgi-derived retrograde transport vesicles with the ER. Required for maintenance of ER network. Implicated in the suppression of cell death.
Storage Condition and Buffer	Rabbit IgG in phosphate buffered saline , pH 7.4, 150mM NaCl, 0.02% sodium azide and 50% glycerol. Store at +4°C short term. Store at -20°C long term. Avoid freeze / thaw cycle.

BNIP1 Antibody - Protein Information**Name** BNIP1**Synonyms** NIP1, SEC20L**Function**

As part of a SNARE complex may be involved in endoplasmic reticulum membranes fusion and be required for the maintenance of endoplasmic reticulum organization (PubMed: [15272311](http://www.uniprot.org/citations/15272311)). Also plays a role in apoptosis (PubMed: [15272311](http://www.uniprot.org/citations/15272311), PubMed: [23896122](http://www.uniprot.org/citations/23896122), PubMed: [7954800](http://www.uniprot.org/citations/7954800))

target="_blank">7954800). It is for instance required for endoplasmic reticulum stress-induced apoptosis (PubMed:23896122). As a substrate of RNF185 interacting with SQSTM1, might also be involved in mitochondrial autophagy (Probable).

Cellular Location

Endoplasmic reticulum membrane; Single-pass type IV membrane protein. Mitochondrion membrane; Single-pass type IV membrane protein. Note=Localization to the mitochondrion is regulated by RNF186.

Tissue Location

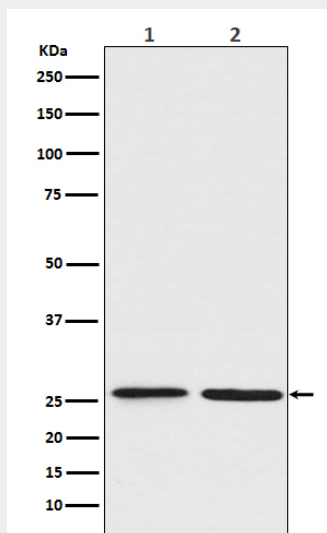
Isoform 1 is highly expressed in heart, brain, liver skeletal muscle and pancreas. Isoform 3 is moderately expressed in placenta, lung and kidney. Isoform 4 is highly expressed in testis and small intestine.

BNIP1 Antibody - Protocols

Provided below are standard protocols that you may find useful for product applications.

- [Western Blot](#)
- [Blocking Peptides](#)
- [Dot Blot](#)
- [Immunohistochemistry](#)
- [Immunofluorescence](#)
- [Immunoprecipitation](#)
- [Flow Cytometry](#)
- [Cell Culture](#)

BNIP1 Antibody - Images



Western blot analysis of BNIP1 expression in (1) Jurkat cell lysate; (2) C6 cell lysate.